

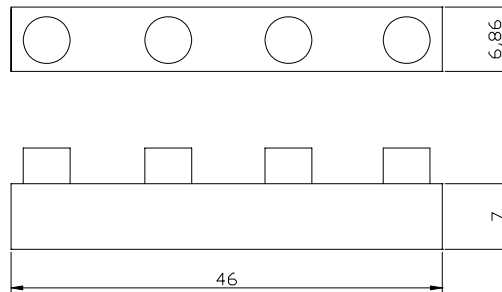


# LED Module JE-005A Specification

## Description



## Dimensions (mm)



### Notes:

1. All dimensions are in millimeters.
2. Tolerance is  $\pm 0.25$  unless otherwise noted.
3. Lead spacing is measured where the lead emerge package.
4. Specifications are subject to change without notice.

## Selection guide

Part No.	Dice	Lens Type	Iv (mcd) @20mA		Viewing Angle 2 $\theta$ 1/2
			Min.	Typ.	
JE-005A	Ultra Bright	Yellow TRANSPARENT	400x 3	600 x 3	100°----120°

## Electrical / Optical characteristics at T<sub>A</sub>=25°C

Parameter	Typ.	Max.	Units
Dominant Wavelength	589		nm



# LED Module JE-005A Specification

Forward Voltage	12	12.2	V
Standing Current	18	20	mA
Power consumption	216	244	mW
Operating temperature	-50°C To +80°C		

