

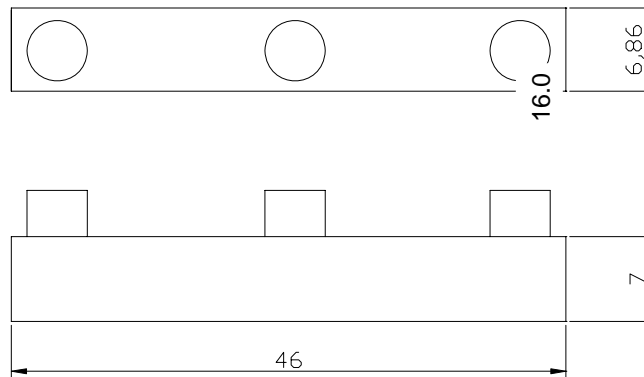


# LED Module JE-004W Specification

## Description



## Dimensions (mm)



### Notes:

1. All dimensions are in millimeters.
2. Tolerance is  $\pm 0.25$  unless otherwise noted.
3. Lead spacing is measured where the lead emerge package.
4. Specifications are subject to change without notice.

## Selection guide

Part No.	Emoted Color	Lens Type	Iv (mcd) @20mA		Viewing Angle
			Min.	Typ.	2 $\theta$ 1/2
JE-004W	Cool White	Clear	800 x 3	1000 x 3	120° $\pm$ 5

## Electrical / Optical characteristics at T<sub>A</sub>=25°C

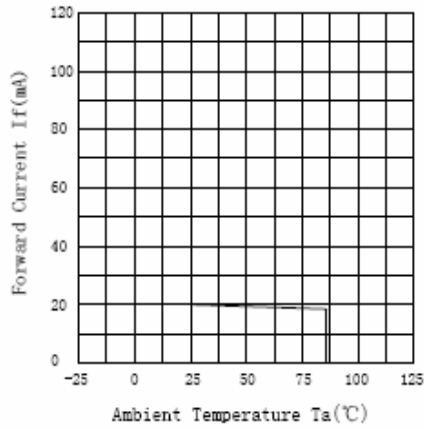
Parameter	Typ.	Max.	Units
Forward Voltage	12	12.2	V



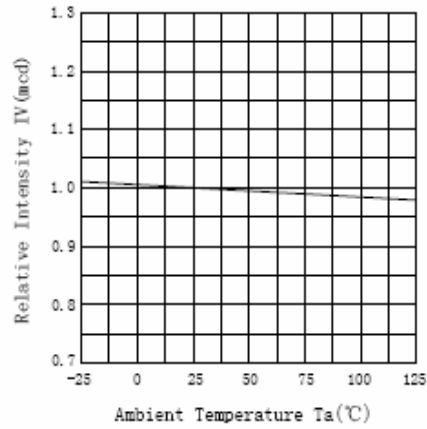
# LED Module JE-004W Specification

Forward Current	18	20	mA
Power consumption	210	240	mW
Operating temperature	-40°C To +85°C		

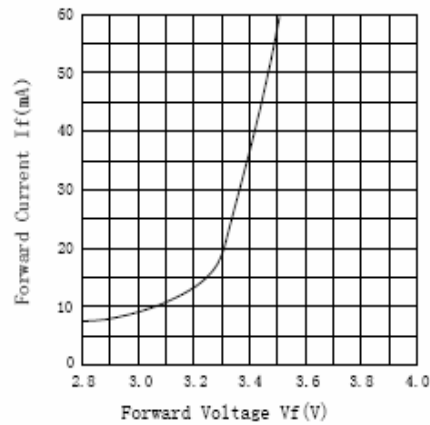
Forward Current vs. Ambient Temperature



Relative Intensity vs. Ambient Temperature



Forward Current vs. Forward Voltage



Forward Voltage vs. Ambient Temperature

