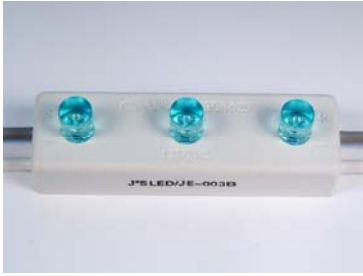


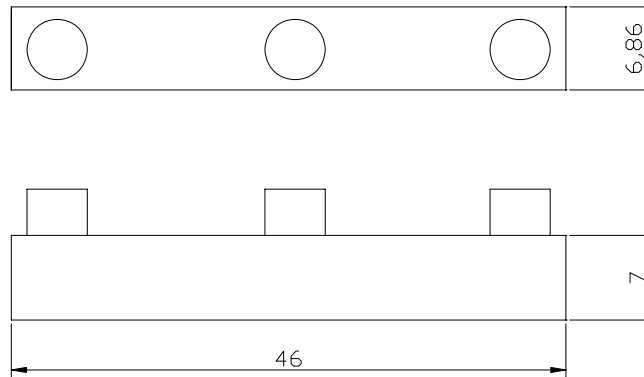


LED Module JE-003B Specification

Description



Dimensions (mm)



Notes:

1. All dimensions are in millimeters.
2. Tolerance is ± 0.25 unless otherwise noted.
3. Lead spacing is measured where the lead emerge package.
4. Specifications are subject to change without notice.

Selection guide

Part No.	Dice	Lens Type	Iv (mcd) @20mA		Viewing Angle 2 θ 1/2
			Min.	Typ.	
JE-003B	Ultra Bright	Blue TRANSPARENT	250x 3	300 x 3	100°-----120°

Electrical / Optical characteristics at $T_A=25^\circ\text{C}$

Parameter	Typ.	Max.	Units
Dominate Wavelength	470.59		nm
Forward Voltage	12	12.2	V



LED Module JE-003B Specification

Standing Current	18	20	mA
Power consumption	216	244	mW
Operating temperature	-50°C To +80°C		

